

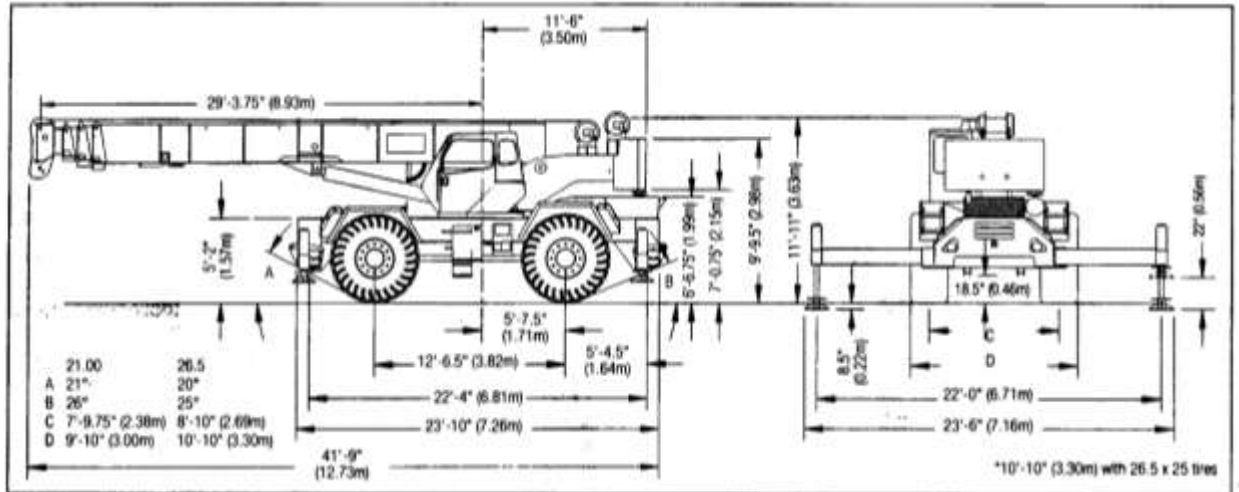
## **GRUA TELESCOPICA RT 4x4**

### ***TEREX RT 450 de 50 Ton***



**Contacto SIMAR PERU:**  
Email: [comercial@simar.pe](mailto:comercial@simar.pe)  
Celular: 947-368-014  
Web: [www.simar.pe](http://www.simar.pe)

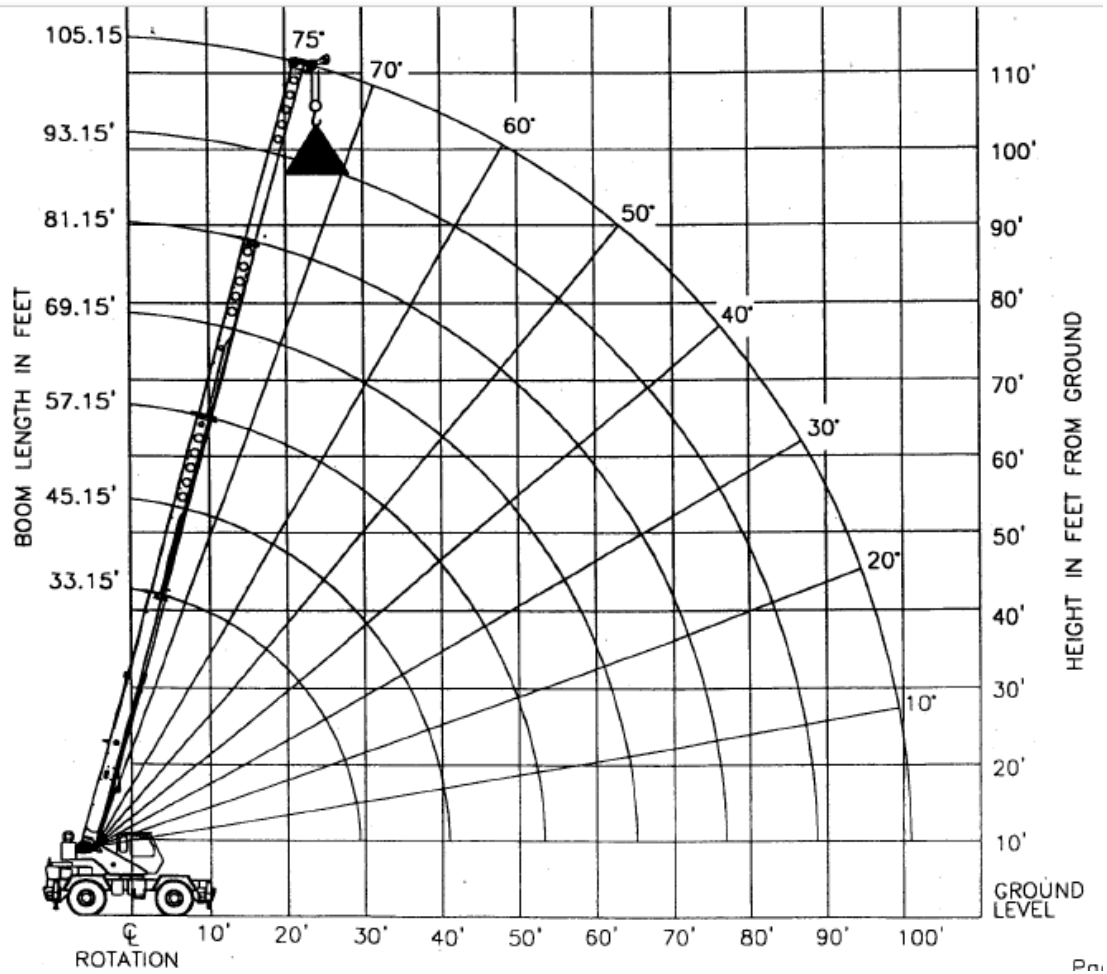
### 1. Dimensiones



WEIGHTS & AXLE LOADS	GROSS WEIGHT LBS.	UPPER FACING FRONT		GROSS WEIGHT KG.	UPPER FACING FRONT	
		FRONT	REAR		FRONT	REAR
Basic Crane with 14,000 lb. (6349 kg) Counterweight and 26.5 x 25 26 PR Tires	76,095	37,192	38,903	34 516	16 870	17 646
<b>Add Options:</b>						
33' (10.06 m) Swing-on jib (Stowed)	+ 1,705	+2,850	-1,145	+ 773	+ 1293	- 520
33'-56' (10.06-17.68 m) Swing-On Jib (Stowed)	+ 2,545	+4,000	-1,455	+ 1154	+ 1814	- 660
Auxiliary Boom Head	+ 100	+ 285	- 185	+ 45	+ 129	- 84
Caterpillar 3116 DITA Engine	+ 180	- 15	+ 195	+ 82	- 7	+ 195
Aux. Winch, 1/2"x450' Wire Rope, Drum Roller	- 85	+ 15	- 80	- 29	+ 7	- 22
Hi-Torg Aux Winch 5/8"x500' Rope, Drum Roller	+ 298	- 45	+ 343	+ 135	- 20	+ 155
50T (45.3 mt) 6-Sheave Hook Block	+ 913	+1,367	- 454	+ 414	+ 620	- 206
50T (45.3 mt) 5-Sheave Hook Block	+ 868	+1,329	- 441	+ 403	+ 603	- 200
7.0T (6.3 mt) Hook and Ball (In tool box)	+ 240	+ 290	- 50	+ 109	+ 130	- 21
<b>Pintle Hook:</b>						
Front	+ 45	+ 60	- 15	+ 20	+ 27	- 7
Rear	+ 45	- 25	+ 70	+ 20	- 11	+ 31
<b>Substitute:</b>						
360° Mechanical House Lock	+ 85	- 38	+ 47	+ 39	- 17	+ 22
21.00 x 25 26 PR Tires	- 460	- 230	- 230	- 208	- 104	- 104
5/8" x 500' of 18x19 class spin resistant wire rope	+ 35	- 5	+ 40	+ 16	- 2	+ 18

**Contacto SIMAR PERU:**  
 Email: [comercial@simar.pe](mailto:comercial@simar.pe)  
 Celular: 947-368-014  
 Web: [www.simar.pe](http://www.simar.pe)

**2. Diagrama de Carga**



**Contacto SIMAR PERU:**  
 Email: [comercial@simar.pe](mailto:comercial@simar.pe)  
 Celular: 947-368-014  
 Web: [www.simar.pe](http://www.simar.pe)

**3. Tabla de carga**

**ON OUTRIGGERS - FULLY EXTENDED**

LOAD RADIUS (FT)	BOOM LENGTH 33.15 FT			BOOM LENGTH 45.15 FT			BOOM LENGTH 57.15 FT			LOAD RADIUS (FT)
	BOOM ANGLE (DEG)	LOADED OVER FRONT (LB)	360° (LB)	BOOM ANGLE (DEG)	LOADED OVER FRONT (LB)	360° (LB)	BOOM ANGLE (DEG)	LOADED OVER FRONT (LB)	360° (LB)	
10	65.3	100,000*	100,000*	72.2	75,100*	75,100*				10
12	61.5	76,200*	76,200*	69.5	73,100*	73,100*	73.9	59,700*	59,700*	12
15	55.4	64,300*	62,500*	65.4	61,800*	61,800*	70.8	55,100*	55,100*	15
20	44.0	46,300*	44,300*	58.1	47,200*	45,200*	65.4	47,700*	45,700*	20
25	29.6	34,800*	33,300*	50.3	35,800*	34,300*	59.7	36,300*	34,800*	25
30	**			41.5	28,100*	27,000*	53.7	28,700*	27,500*	30
35				30.7	22,700*	21,700*	47.2	23,200*	22,300*	35
40				13.9	18,500*	17,700*	39.9	19,100*	18,300*	40
45				**			31.3	15,900*	15,200*	45
50							19.6	13,300*	12,700*	50
55							**			55
60										60
65										65
70										70
75										75
80										80
85										85
90										90
95										95
100										100

**Contacto SIMAR PERU:**  
 Email: [comercial@simar.pe](mailto:comercial@simar.pe)  
 Celular: 947-368-014  
 Web: [www.simar.pe](http://www.simar.pe)



# ESPECIFICACIONES TECNICAS Y TABLA DE CARGA

F. Elaboración:  
Abril 2018  
Rev.: 00

## GRUAS TELESCOPICAS RT

Página:  
5 de 5

### ON OUTRIGGERS - FULLY EXTENDED

LOAD RADIUS (FT)	BOOM LENGTH 69.15 FT			BOOM LENGTH 81.15 FT			BOOM LENGTH 93.15 FT			BOOM LENGTH 105.15 FT			LOAD RADIUS (FT)
	LOADED BOOM ANGLE (DEG)	OVER REAR (LB)	360° (LB)	LOADED BOOM ANGLE (DEG)	OVER REAR (LB)	360° (LB)	LOADED BOOM ANGLE (DEG)	OVER REAR (LB)	360° (LB)	LOADED BOOM ANGLE (DEG)	OVER REAR (LB)	360° (LB)	
10													10
12													12
15	74.2	44,000*	44,000*										15
20	69.8	36,200*	36,200*	72.9	33,500*	33,500*							20
25	65.4	30,400*	30,400*	69.2	28,400*	28,400*	72.0	22,200*	22,200*				25
30	60.7	26,100*	26,100*	65.4	24,300*	24,300*	68.7	19,000*	19,000*	71.2	15,100*	15,100*	30
35	55.8	22,800*	22,600*	61.4	21,100*	21,100*	65.4	16,300*	16,300*	68.3	13,400*	13,400*	35
40	50.7	19,500*	18,700*	57.3	18,700*	18,700*	61.9	14,300*	14,300*	65.4	12,000*	12,000*	40
45	45.1	16,300*	15,600*	53.0	16,500*	15,800*	58.4	12,400*	12,400*	62.3	10,800*	10,800*	45
50	38.9	13,800*	13,100*	48.4	14,000*	13,400*	54.7	10,900*	10,900*	59.2	9,600*	9,600*	50
55	31.7	11,500*	10,900*	43.5	11,700*	11,000*	50.8	9,700*	9,700*	56.0	8,600*	8,600*	55
60	22.6	9,500*	8,900*	38.1	9,700*	9,100*	46.7	8,700*	8,700*	52.6	7,600*	7,600*	60
65				32.0	8,100*	7,600*	42.4	7,800*	7,700*	49.1	6,700*	6,700*	65
70				24.5	6,700*	6,200*	37.6	6,900*	6,400*	45.4	6,000*	6,000*	70
75				13.7	5,500*	5,100*	32.2	5,700*	5,300*	41.4	5,300*	5,300*	75
80				**			25.8	4,800*	4,400*	37.1	4,700*	4,500*	80
85							17.5	3,900*	3,500*	32.3	4,000*	3,700*	85
90							**			26.8	3,300*	2,900*	90
95										20.0	2,600*	2,300*	95
100										9.1	2,000*	1,700*	100

**Contacto SIMAR PERU:**  
 Email: [comercial@simar.pe](mailto:comercial@simar.pe)  
 Celular: 947-368-014  
 Web: [www.simar.pe](http://www.simar.pe)